

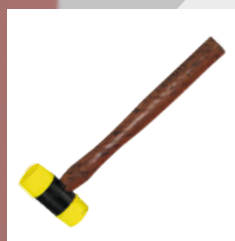
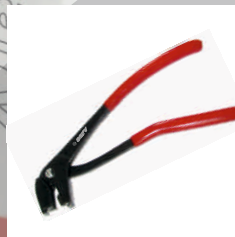


Professional Tyre & Garage Tools since 1987

WHEEL BALANCING MACHINE ACCESSORIES



2 0 2 1 - 2 0 2 2





1 110001



1 110011



1 110031



1 110051



2 110101



2 1100019



3 115011



4 111001



5 110021



6 110184



7 110009



8 110002



9 110003

1 Wheel Balancing Weight Plier (Premium)

Colour:	Size:	Weight:	Code No.
Red	255mm long	395gms	110001
Black	255mm long	395gms	110011
Blue	255mm long	395gms	110031
Green	255mm long	395gms	110051

Material : Drop Forged Chrome Vanadium Steel, hardened & tempered for longer life.

Finish : Sand Blasted, Nickel Chrome plated polished hammer head with PVC coated handle for hand protection.

Use : Loosening, cutting to size & securing wheel weights.

2 Wheel Balancing Weight Plier with Soft Head

Size:	Weight:	Code No.
255mm long	390gms	110101

Use : Loosening, cutting to size & securing wheel weights on the Aluminum Alloy rims.

Special Plastic Hammer Head

Size:	Weight:	Code No.
27mm Dia (OD)	7gms	1100019

Note : This Hammer head fits only on the Plier 110101.

3 Wheel Balancing Weight Plier

Size:	Weight:	Code No.
255mm long	341gms	115011

Material : Drop Forged Chrome Vanadium Steel, hardened & tempered.

Finish : Sand Blasted, Nickel Chrome Plated polished Hammer head with PVC coated handle for hand protection.

4 Wheel Balancing Weight Plier

Size:	Weight:	Code No.
260mm long	380gms	111001

Material : Drop Forged Chrome Vanadium Steel, hardened & tempered.

Finish : Black Powder Coating with red PVC handle.

5 Plier with Longer Hammer (Heavy & Strong)

Size:	Weight:	Code No.
260mm long	535gms	110021

Material : Drop Forged Chrome Vanadium Steel, hardened & tempered.

Finish : Heavy & extra strong. Black Powder Coating with red PVC handle.

6 Deluxe Soft Head Wheel Weight Plier

Size:	Weight:	Code No.
260mm long	500gms	110184

Material : Heat Strengthened Steel. Comfortable Vinyl handle grip. Replaceable special Plastic durable Hammer cap.

7 Wheel Balancing Weight Plier for Truck

Size:	Weight:	Code No.
265mm long	680gms	110009

Material : Drop Forged Chrome Vanadium Steel, hardened & tempered.

Use : Removing and fixing of Truck wheel weights.

8 Wheel Balancing Weight Plier (Sheet Metal)

Size:	Weight:	Code No.
250mm long	315gms	110002

Material : Sheet Metal of EN9 Steel, hardened and tempered.

Finish : Sand Blasted Auto Black, with red PVC handle.

9 Wheel Balancing Weight Plier with Soft Head (Sheet Metal)

Size:	Weight:	Code No.
240mm long	400gms	110003

Material : Sheet metal of EN9 Steel, hardened and tempered.

Finish : Sand Blasted Auto Black, PVC coated handles for hand protection.

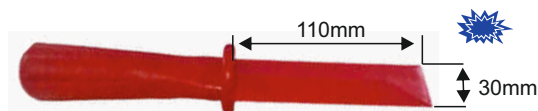
Use : For removing and fixing of wheel weights having replaceable Nylon soft head with Nylon coated remover to prevent scratching.



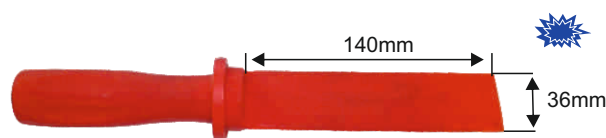
10 110204



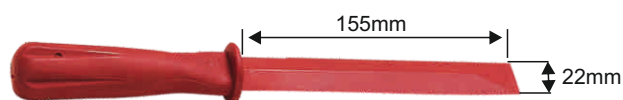
11 110174



12 110046



12 110056



12 110006



12 110026



13 1100012



14 1100014



15 110229



16 110029



17 1100212

10 Adhesive Weight Removing Plier

Size:	Weight:	Code No.
260mm long	425gms	110204

Material : Chrome Vanadium Steel / Special Alloy.

Use : Removes adhesive weights easily without damaging the soft metal rim. Light weight yet heavy duty. Comfortable angled design makes it go deeply inside.

11 Adhesive Weight Cutter

Size:	Weight:	Code No.
190mm long	245gms	110174

Material : Carbon Steel.

Use : Used for cutting easily the segments of adhesive weight strip.

12 Adhesive Balance Weight Remover

Colour:	Size:	Weight:	Code No.
Red	225mm long	80gms	110046
Red	265mm long	125gms	110056
Red	272mm long	85gms	110006
Blue	272mm long	85gms	110006BLU
Red	270mm long	75gms	110026
Blue	270mm long	75gms	110036

Material : PA6

Use : For removing emblems, body moulding or adhesive wheel weights without damaging alloy rims. Can be re-sharpened. Easily scrapes off wheel weights, sticker or gasket.

13 Clip Fitting Tool

Size:	Weight:	Code No.
220mm long	130gms	1100012

Material : CRC Sheet Steel.

Opening : 15.5mm & 19.0mm

Use : Tool designed for fixing/removing two piece balance weight. Used to hook & lift the clip for the fixing or removal of weight body.

14 Insertion Tool For Spoke Weights

Size:	Weight:	Code No.
460mm long	1.100kg	1100014

Material : Special Steel Casting.

Finish : Sand Blasted Powder Coating.

Use : A specialized tool for application of weights on spoked motorcycle rims. It transmits the energy required to close the weights without damage to the spokes, rims or tyre.

15 Wheel Weight Fixer

Size:	Weight:	Code No.
280mm long	450gms	110229

Material : Wooden handle, special Plastic Hammer head & middle part made from Casting.

Use : Used for securing/fixing wheel balancing weights by hammering clip weights and adhesive strips. Having special Plastic Hammer head to protect the wheel weights and light metal alloy rims.

16 Wheel Weight Remover/Fixer

Size:	Weight:	Code No.
280mm long	440gms	110029

Material : Replaceable Pin made from Special Spring Steel.

Use : For fixing & removing wheel balance weights while balancing wheels. Having special Plastic Hammer head to protect the coated wheel weights & alloy rims.

17 Bead Compression Tool

Size:	Weight:	Code No.
490mm long	4.000kg	1100212

Material : Made from Cast Steel.

Use : Designed to compress the bead wall of an inflated tyre for the insertion of a balancing weight clip. It is released so that the inflated tyre holds the clip in position.



18 110007



19 110008



20 1100010



21 110005



21 110025



22 110015



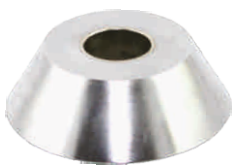
23 1143694



23 1160814



23 11791104



23 11881374



23 11951854



24 110404

18 Rim Width Caliper (Standard)

Size:	Weight:	Code No.
Measures wheel rim width from 3" to 14"	450gms	110007

Material : ABS (Acrylonitrile Butadiene Styrene) for greater impact, strength & longer durability.

Finish : High surface finish. Measuring scales have been designed by in mould and hot stamped for longer life and best readability.

Use : Measures wheel rim width while balancing in 1/2" or 1" increment.

19 Rim Width Caliper (with Ears)

Size:	Weight:	Code No.
Measures wheel rim width from 4" to 13"	480gms	110008
Inner dia 10" to 17"		

Material : PA6 glass filled or ABS.

Finish : Black colour dull finish. The scales are screen printed for easy and quick readability.

Use : For measuring inner and outer width of the wheels.

20 Rim Width Caliper (for Trucks)

Size:	Weight:	Code No.
Measure wheel rim width from 4" to 16"	1.350kg	1100010

Material : PA6 glass filled for super impact resistance. Measuring jaws made out of Steel pipe.

Finish : Black colour and dull finish.

Use : Measuring rim width of Truck wheels.

21 PCD Measuring Tool

Weight:	Code No.
110gms	110005
120gms	110025

Material : PA6 glass filled.

Use : To measure pitch circle diameter of wheels having mounting holes 3, 4 and 5.

22 PCD Measuring Tool

Weight:	Code No.
105gms	110015

Material : PA6 glass filled.

Use : To measure pitch circle diameter of wheels having mounting holes 3, 4, 5 and 6.

23 Self Centering Cone (Available in Two Bore Sizes)

	For 36mm dia shaft		For 40mm dia shaft	
Rim Hole Size:	Weight	Code No.	Weight:	Code No.
Dia 43.0-65mm	400gms	1143693	340gms	1143694
Dia 54.0-80mm	900gms	1160813	790gms	1160814
Dia 74.0-112mm	2.100kg	11791103	2.050kg	11791104
Dia 88.5-137mm	1.725kg	11881373	1.625kg	11881374
Dia 98.0-183mm	-----	-----	5.500kg	11951854

Note : Cone 11951854 is used for Heavy Commercial Vehicles.

CONESSET (Set of 3 Cones for 36mm & 40mm shaft)

Cones for 36mm dia shaft		Weight:	Code No.
1143693, 1160813, 11791103		3.400kg	CONESSET36
Cones for 40mm dia shaft			
1143694, 1160814, 11791104		3.180kg	CONESSET40

24 Threaded Shaft

Size:	Weight:	Code No.
36 x 3mm	1.100kg	110363
40 x 3mm	1.165kg	110403
40 x 4mm	1.170kg	110404

Use : Threaded shaft for Wheel Balancing Machine needed for the mounting of wheels for balancing.



25 1103659



26 1104049



27 1104049R



26 1104050



27 1104050R



26 1104051



27 1104051R



26 1104052



27 1104052R



28 1104060



29 1104053

25 Quick Lock Nut for Wheel Balancing Machine

Size:	Weight:	Code No.
36 x 3mm	570gms	1103659
40 x 3mm	575gms	1104059
40 x 4mm	575gms	1114059

Use : Used for clamping wheels on the shaft of the Wheel Balancing Machine.

Inserts for Quick Lock Nut

Dia:	Size:	Weight:	Code No.
20mm	36 x 3mm	40gms	1123659
20mm	40 x 3mm	40gms	1124059
20mm	40 x 4mm	40gms	1134059

26 Standard Pressure Cup (with Rubber Ring)

Dia:	Height:	Weight:	Code No.
130mm (5")	60mm	235gms	1104049
		Suitable for 1103659	
130mm (5")	60mm	200gms	1104050
		Suitable for 1104059	
115mm (4.5")	64mm	300gms	1104051
150mm (6")	76mm	480gms	1104052

Material : PA6 glass filled.

Use : Used with Quick Release Nut of Wheel Balancing Machine.

27 Rubber Ring for Pressure Cup

Used with:	Weight:	Code No.
Pressure cup 1104049	29gms	1104049R
Pressure cup 1104050	23gms	1104050R
Pressure cup 1104051	46gms	1104051R
Pressure cup 1104052	62gms	1104052R

Material : Special Blended Rubber.

Use : Protects finished wheel surfaces when using a cup to clamp.

28 Wheel Clamping Cup

Dia:	Height:	Weight:	Code No.
225mm	40mm	525gms	1104060

Material : Nylon

Use : Large diameter 225 mm clamping hood for alloy rims.

29 Pressure Ring

Dia:	Height:	Weight:	Code No.
82mm	25mm	60gms	1104053

Material : PA6 glass filled.

Use : Protects finished wheel surfaces when using a cup to clamp. Prevents metal to metal contact between the wheel balancer wing nut and wheel rim significantly increasing clamping force. Fits Aluminum Wing Nut. Aids in centering the wheel assembly on the balancer shaft.

30 Motorcycle External Clamping Kit

Weight:	Code No.
6.300kg	113040KIT

The Kit contains the following items:

	Qty.
Balancer Shaft	1 No.
Spacer	3 No.
Shaft Nuts	8 No.
Cones	4 No.

Use : Mounts Motorcycle wheels for balancing without removing the bearings on the Balancing Machines. The out clamp arms keep the wheel firmly in place. Supplied with mounting hardware. Suitable for 40mm shaft dia.



30 113040 KIT



31 110040UA



31 CRING58

31 CRING60

31 CRING65



32 1100518 - 1112018



33 1100528 - 1106028



34 1105038 - 1120038



35 1105048 - 1150048



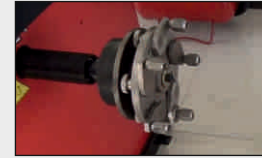
36 1100058



36 1100050



36 1110060

31 Universal Wheel Balancing Adaptor**Weight:**
5.00kg**Code No.**
110040UA**Material :** Special Steel.**Finish :** Nickel Plating.**Use :** Standard centering device to balance rims without central hole.
Suitable for 36 / 38 / 40 mm shaft dia.
Valid for rims with 3, 4, 5 & 6 screws.**Centering rings for Universal Wheel Balancing Adaptor**

Dia:	Weight:	Code No.
58mm	191gms	CERING58
60mm	212gms	CERING60
65mm	271gms	CERING65

Use : These rings are used for balancing the rims of French brands because just tightening the centering bolts is not enough.
Dia 58mm ring is used for Citroen & Peugeot.
Dia 60mm ring is used for Renault.
Dia 65mm ring is used for Citroen, Peugeot and Renault.**32 Balancing Weights for Steel Rims**

Weight:	Code No.	Weight:	Code No.
5gms	1100518	65gms	1106518
10gms	1101018	70gms	1107018
15gms	1101518	75gms	1107518
20gms	1102018	80gms	1108018
25gms	1102518	85gms	1108518
30gms	1103018	90gms	1109018
35gms	1103518	95gms	1109518
40gms	1104018	100gms	1110018
45gms	1104518	105gms	1110518
50gms	1105018	110gms	1111018
55gms	1105518	115gms	1111518
60gms	1106018	120gms	1112018

Use : To accurately balance the wheels for proper run on the roads.**33 Wheel Balancing Clip Weights for Alloy Rims**

Weight:	Code No.	Weight:	Code No.
5gms	1100528	35gms	1103528
10gms	1101028	40gms	1104028
15gms	1101528	45gms	1104528
20gms	1102028	50gms	1105028
25gms	1102528	55gms	1105528
30gms	1103028	60gms	1106028

34 Wheel Balancing Weights for LCV Steel Rims

Weight:	Code No.	Weight:	Code No.
50gms	1105038	125gms	1112538
75gms	1107538	150gms	1115038
100gms	1110038	200gms	1120038

35 Wheel Balancing Weights for Truck/Bus Steel Rims

Weight:	Code No.	Weight:	Code No.
50gms	1105048	250gms	1125048
75gms	1107548	300gms	1130048
100gms	1110048	400gms	1140048
150gms	1115048	500gms	1150048
200gms	1120048		

36 Wheel Balancing Sticker Weights for Alloy Rims

Material:	Weight:	Code No.
Lead	Per Strip 60gms	1100058
Steel	Per Strip 50gms	1100050
Steel	Per Strip 60gms	1110060

MANUFACTURING AND EXPORTS TO **70+** COUNTRIES SINCE **1987**



WORLDWIDE PRESENCE



or Log on to
www.sarveshwari.com



or Like our
Facebook Page
Sarveshwari Engineers



or Subscribe to our
YouTube Channel
Sarveshwari Engineers



Professional Tyre & Garage Tools since 1987

Sarveshwari Engineers

355 Deepali, Pitampura, Delhi - 110 034 (INDIA)

Tel.: 91-11-2702 3750, 91-11-2702 1499

Web: www.sarveshwari.com

E-mail : info@sarveshwari.com

